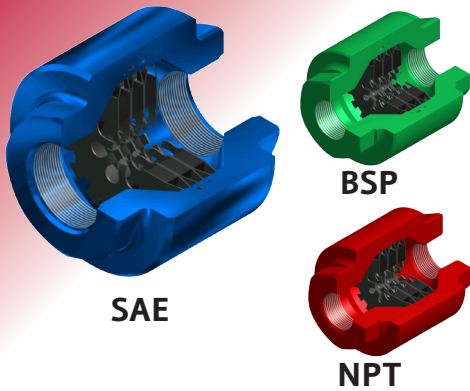


'MFLP' MAGNETIC FILTER

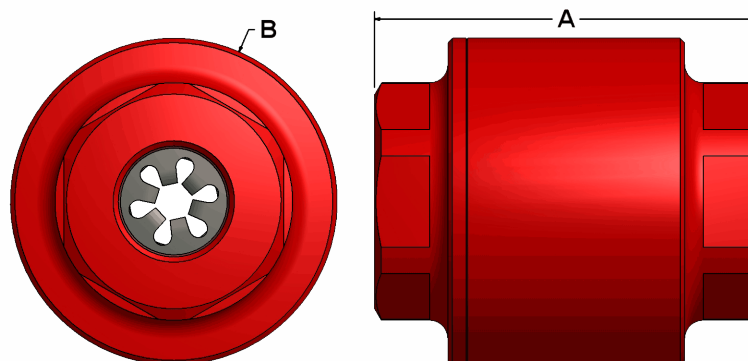


DMIC introduces magnetic inline filters for various applications to 3,000 PSI. Using patented technology, these filters can remove particles smaller than 1µm and provide good particle capacity for time between filter core changes. Once the unit is at capacity, the unit can be disassembled and a new core can be installed.

- High Quality bidirectional housing can be mounted in either direction
- Many sizes available up to 3"
- Customer specified connection
- Available in stainless steel or aluminum
- Pressure ratings up to 3000 PSI
- Fully compatible with DMIC's "SSW" Line
- Body is anodized according to thread, just like our color coded top caps (Aluminum only)
- Can Capture contamination smaller than 1 µm in size
- Utilizes patented high capacity cores. High capacity and generous flow paths yield long service and extremely low pressure drop

Dimensional View

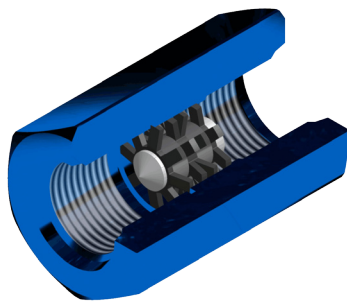
MFLP	Nominal Size	Port Thread	Contaminant Capacity(g)	Maximum Fluid Velocity(ft/s)	Dimensions (inches)	
					A Length	B Body Diameter
MFLP-1250N-**	1¼"	1¼" NPT	140	15	5.20	3.00
MFLP-1250S-**		-20 SAE				
MFLP-1250B-**		1¼" BSPP				
MFLP-1500N-**	1½"	1½" NPT	200	15	5.90	4.00
MFLP-1500S-**		-24 SAE				
MFLP-1500B-**		1½" BSPP				
MFLP-2000N-**	2"	2" NPT	200	15	5.90	6.00
MFLP-2000S-**		-32 SAE				
MFLP-2000B-**		2" BSPP				
MFLP-2500N-**	2½"	2½" NPT	400	15	9.30	8.95
MFLP-2500S-**		-40 SAE				
MFLP-2500B-**		2½" BSPP				
MFLP-3000N-**	3"	3" NPT	400	15	9.30	8.95
MFLP-3000S-**		-48 SAE				
MFLP-3000B-**		3" BSPP				



MFLP



'MFHP' MAGNETIC FILTER



SAE

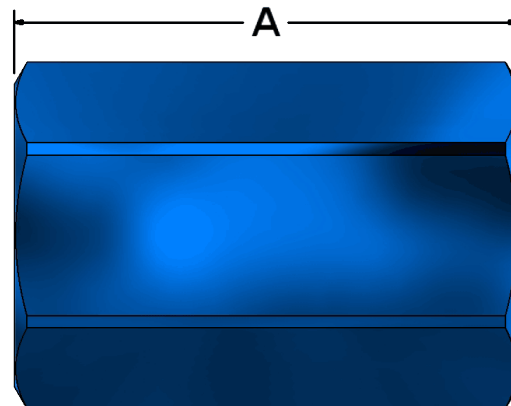
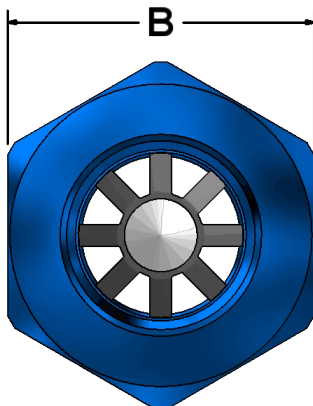


DMIC introduces magnetic inline filters for various applications to 6,000 PSI. Using patented technology, these filters can remove particles smaller than 1µm and provide good particle capacity for time between filter core changes. Once the unit is at capacity, the unit can be disassembled and a new core can be installed.

- Unique bidirectional DMIC Filter Housing using magnetic filters
- Many sizes available up to 1¼"
- Customer specified connection
- Available in stainless steel or aluminum
- Pressure ratings up to 6,000 PSI
- Fully compatible with DMIC's "SSW" Line
- Body is anodized according to thread, just like our color coded top caps (Aluminum only)
- Can Capture contamination smaller than 1 µm in size
- Powerful Samarium Cobalt Magnets pull contamination out of systems with high fluid velocities

Dimensional View

MFHP	Nominal Size	Port Thread	Contaminant Capacity(g)	Maximum Fluid Velocity(ft/s)	Dimensions (inches)	
					A Length	B Hex
MFHP-0625S-**	5/8"	-10 SAE	Call Factory	15	2.50	1.38
MFHP-0625B-**		5/8" BSPP				
MFHP-0750S-**	3/4"	-12 SAE		15	2.88	1.75
MFHP-0750B-**		3/4" BSPP				
MFHP-1000N-**	1"	1" NPT		15	2.88	2.25
MFHP-1000S-**		-16 SAE				
MFHP-1000B-**		1" BSPP				
MFHP-1250N-**	1¼"	1¼" NPT		15	3.00	2.50
MFHP-1250S-**		-20 SAE				
MFHP-1250B-**		1¼" BSPP				

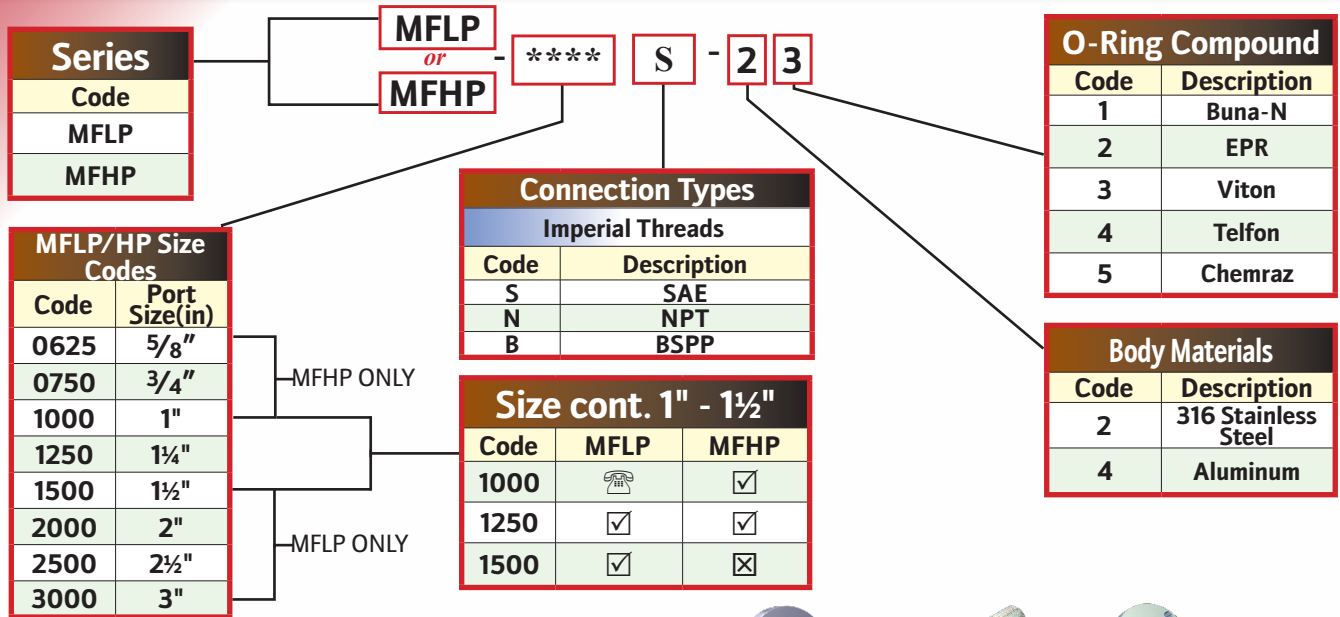


MFHP



'MFLP/MFHP' MAGNETIC FILTER

Ordering Codes Summary



2+2 Ordering

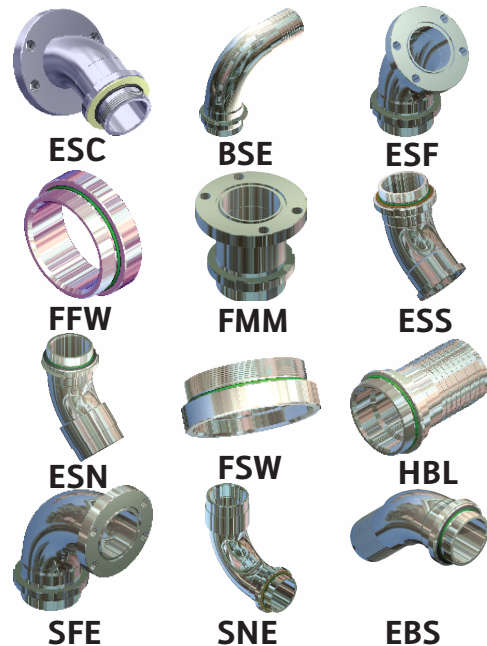
MFHP/LP Filters can be ordered in combination for your convenience! Specify DMIC's SSW Components for a wide array of connection types!

Connections Available

N	NPT
MN	MALE NPT
B	BSPP
S	SAE
SM	C.61 SPLIT HEAD
SH	C.62 SPLIT HEAD
FM	C.61 COMPANION FLANGE
FH	C.62 COMPANION FLANGE
FL	C.61 STANDARD FLANGE
FK	C.62 STANDARD FLANGE
AA	ANSI #150 FLANGE

Ordering Example

Side 1:	SAE ORB - 12(1" SAE)
Side 2:	1" C.62 Split Head
Stainless Steel for 6000 PSI	
Viton O-Ring	
Part Number:	MFHP-10S-10SH-23



SAE with C.61/C.62 Split Flanges

Due to our policy of continual product improvement, the specifications in this catalog may change without notice. When designing by spec, please request a certified print.

